

**FIRST SCHEDULE**

**DESCRIPTION OF DETERMINATION AREA A**

Determination Area A, shown on Attachment 1 to this Schedule, comprises all of the land and waters bounded by the following description of the External Boundaries, except those areas described in this Schedule under the headings "Internal Boundaries" and "Exclusions from Determination Area A".

**External Boundaries**

Commencing at the intersection of Latitude 22.705647 South and Longitude 117.334829 East and extending generally northwesterly, generally northeasterly and generally southeasterly passing through the following coordinate positions:

<b>LATITUDE (SOUTH)</b>	<b>LONGITUDE (EAST)</b>
22.700554	117.333330
22.696324	117.332070
22.691344	117.329640
22.684674	117.325919
22.678464	117.322629
22.673354	117.319819
22.667144	117.316349
22.662154	117.312669
22.657734	117.309169
22.652494	117.304369
22.644944	117.300039
22.638644	117.298309
22.628284	117.295499
22.621864	117.294208
22.616954	117.293578
22.610474	117.292718
22.605384	117.291408
22.600404	117.289228
22.596864	117.287528
22.591664	117.286838
22.587434	117.285828
22.581874	117.283088
22.574504	117.278878
22.566604	117.274298
22.560054	117.271268
22.550894	117.266888
22.544814	117.264778

22.536354	117.260958
22.528474	117.257377
22.522394	117.256137
22.516374	117.254397
22.513194	117.253757
22.509614	117.253167
22.507244	117.252767
22.504524	117.252237
22.502154	117.251767
22.499434	117.251487
22.496664	117.250897
22.493654	117.250677
22.490544	117.250777
22.487254	117.251007
22.482754	117.251807
22.479074	117.253658
22.475803	117.255998
22.472593	117.257658
22.466723	117.260279
22.462873	117.261879
22.457243	117.264999
22.453613	117.266229
22.449293	117.267649
22.446133	117.268429
22.442093	117.268730
22.437003	117.268290
22.432133	117.265920
22.428413	117.262599
22.425433	117.258589
22.422613	117.253199
22.420713	117.247179
22.418753	117.241159
22.416394	117.235208
22.413974	117.229638
22.412654	117.224048
22.410804	117.218147
22.408735	117.211947
22.408355	117.208146
22.407785	117.203296
22.407656	117.194576
22.406606	117.187426
22.405096	117.179476
22.403776	117.173886
22.402156	117.167916
22.400306	117.161096
22.398856	117.154065
22.397516	117.146046
22.396186	117.139026
22.394756	117.133686
22.392155	117.128056
22.389805	117.122656
22.388535	117.116756
22.389036	117.108155

22.389826	117.099425
22.391486	117.091555
22.392356	117.085315
22.392277	117.077035
22.392367	117.067315
22.392307	117.060905
22.390757	117.055445
22.388697	117.050735
22.386397	117.045405
22.383177	117.040515
22.380197	117.037005
22.377117	117.033925
22.372407	117.030995
22.366897	117.027695
22.363527	117.025745
22.359997	117.024225
22.357207	117.021895
22.354057	117.018505
22.350267	117.014995
22.346717	117.011305
22.341247	117.006696
22.332977	117.004546
22.325246	117.005446
22.319716	117.006576
22.316256	117.007056
22.310496	117.008486
22.306296	117.009976
22.302036	117.012017
22.297375	117.014127
22.291285	117.016317
22.286275	117.018307
22.281555	117.019607
22.277064	117.021157
22.270554	117.022727
22.265414	117.022977
22.261083	117.022587
22.255533	117.021537
22.248243	117.019317
22.243203	117.017877
22.238113	117.016876
22.235973	117.016596
22.231352	117.016086
22.227252	117.015696
22.222802	117.015006
22.221873	117.014791
22.220969	117.016828
22.219019	117.018327
22.216021	117.020127
22.215271	117.022826
22.215571	117.025075
22.215421	117.026425
22.214371	117.028974
22.213022	117.031973

22.213320	117.034222
22.214520	117.036171
22.216469	117.039920
22.216769	117.042619
22.216619	117.045318
22.213770	117.048317
22.209722	117.051166
22.206573	117.052216
22.203424	117.053715
22.202524	117.056265
22.202075	117.059414
22.202824	117.062113
22.204174	117.063762
22.205973	117.065711
22.208672	117.069460
22.210621	117.073058
22.211221	117.077857
22.211071	117.082655
22.212121	117.086704
22.213920	117.090003
22.214520	117.092852
22.216619	117.095701
22.218269	117.097050
22.220222	117.100937
22.209805	117.106227
22.202459	117.107707
22.194499	117.108363
22.184443	117.109553
22.174179	117.110857
22.166156	117.111048
22.156822	117.113840
22.150839	117.115724
22.146221	117.117609
22.141414	117.118906
22.136307	117.121729
22.129313	117.123675
22.121760	117.124385
22.113248	117.125660
22.108900	117.129344
22.105642	117.135853
22.104939	117.144671
22.103383	117.147342
22.100838	117.153263
22.097182	117.159694
22.092215	117.166353
22.088563	117.176706
22.086138	117.188310
22.084678	117.200028
22.084040	117.211778
22.082129	117.221886
22.077935	117.229913
22.072144	117.236299
22.064936	117.241509

22.057633	117.249382
22.052635	117.256706
22.047173	117.265259
22.042482	117.271821
22.041632	117.277535
22.040094	117.283998
22.039728	117.286431
22.037543	117.295748
22.034773	117.303681
22.032779	117.311913
22.032139	117.320558
22.031913	117.325380
22.028705	117.329889
22.023323	117.333139
22.015178	117.339913
22.009426	117.343064
22.004443	117.345337
22.003438	117.346277
22.005342	117.351166
22.008242	117.358606
22.010242	117.363066
22.013172	117.368136
22.016702	117.374947
22.020522	117.382877
22.023632	117.387947
22.025502	117.391167
22.027852	117.395497
22.031552	117.401927
22.035362	117.408867
22.039002	117.415047
22.041762	117.420247
22.044232	117.425947
22.045662	117.430727
22.046822	117.437127
22.047332	117.443357
22.047632	117.450137
22.047852	117.455677
22.047662	117.459797
22.046272	117.465667
22.044992	117.471228
22.043491	117.477658
22.042721	117.482768
22.041711	117.491509
22.041191	117.498429
22.040731	117.504720
22.041101	117.507710
22.041071	117.510140
22.042121	117.517790
22.043921	117.526170
22.046761	117.533050
22.049511	117.537510
22.052921	117.543820
22.055811	117.551451

22.059181	117.559571
22.062481	117.567380
22.066901	117.577290
22.070571	117.587460
22.074001	117.597010
22.075951	117.607580
22.078431	117.620440
22.080551	117.631320
22.082131	117.640451
22.082551	117.648361
22.082781	117.654521
22.083301	117.661121
22.084101	117.666281
22.085181	117.671000
22.086331	117.676780
22.087071	117.683000
22.087931	117.687970
22.088431	117.692140
22.089691	117.698170
22.090431	117.703020
22.091061	117.709240
22.091401	117.714840
22.091701	117.722119
22.091371	117.730219
22.090781	117.735769
22.089231	117.742329
22.088541	117.749009
22.088531	117.754739
22.089721	117.758329
22.092592	117.763159
22.098292	117.768009
22.103002	117.771689
22.105562	117.773719
22.107942	117.775439
22.111612	117.778759
22.118072	117.784719
22.121492	117.786919
22.124642	117.790439
22.128912	117.796549
22.130902	117.799579
22.133492	117.805159
22.137042	117.813899
22.140102	117.820589
22.142633	117.826599
22.144663	117.833799
22.146693	117.840999
22.149003	117.847889
22.151063	117.852349
22.152893	117.855879
22.153863	117.861409
22.154023	117.866389
22.153422	117.870759
22.153472	117.875799

22.156582	117.881618
22.159852	117.885318
22.163702	117.890258
22.167732	117.895248
22.170882	117.898887
22.173512	117.902597
22.177081	117.907657
22.179541	117.912057
22.182361	117.916626
22.185871	117.922066
22.190131	117.927126
22.193111	117.931136
22.196440	117.935705
22.200580	117.940585
22.203500	117.943905
22.206480	117.947795

Thence southeasterly to the intersection of a western boundary of pastoral lease 3114/465 (Mount Florance) with Latitude 22.210019 South. Thence southerly and easterly along the boundaries of that pastoral lease, to Longitude 117.966611 East. Thence generally southeasterly through the following coordinate points:

<b>LATITUDE (SOUTH)</b>	<b>LONGITUDE (EAST)</b>
22.224921	117.969875
22.229931	117.974365

Thence southeasterly to the intersection of a western boundary of reserve 30082 (Karijini National Park) with Latitude 22.230431 South. Thence generally southwesterly and easterly along the boundaries of that reserve to Longitude 118.016010 East. Thence generally southwesterly to Latitude 22.283661 South, Longitude 118.018147 East. Thence southeasterly to the intersection of a western boundary of reserve 30082 (Karijini National Park) with Latitude 22.288220 South. Thence southerly, westerly and again southerly along boundaries of that reserve to Latitude 22.347871 South. Thence generally southwesterly and generally southeasterly through the following coordinate points:

<b>LATITUDE (SOUTH)</b>	<b>LONGITUDE (EAST)</b>
22.347891	118.002685
22.348850	117.999755
22.350791	117.997545
22.354361	117.996015
22.357921	117.994535
22.361091	117.993505
22.364491	117.993275
22.367561	117.994486
22.370531	117.996946

22.373621	118.000266
-----------	------------

Thence southeasterly to the intersection of a western boundary of reserve 30082 (Karijini National Park) with Latitude 22.375657 South. Thence southerly and easterly along boundaries of that reserve to Longitude 118.030827 East. Thence generally southeasterly and generally easterly through the following coordinate points:

<b>LATITUDE (SOUTH)</b>	<b>LONGITUDE (EAST)</b>
22.524335	118.036370
22.527665	118.041000
22.530885	118.045260
22.533405	118.049721
22.534596	118.053501
22.535056	118.059971
22.534706	118.066461
22.534256	118.073311
22.534026	118.079861

Thence easterly to the intersection of a western boundary of reserve 30082 (Karijini National Park) with Latitude 22.533953 South. Thence southerly, generally westerly and again southerly along the boundaries of that reserve to Latitude 22.874031 South. Thence generally northwesterly and generally southwesterly through the following coordinate points:

<b>LATITUDE (SOUTH)</b>	<b>LONGITUDE (EAST)</b>
22.872848	117.895783
22.872428	117.894094
22.872362	117.892391
22.869444	117.884162
22.867949	117.879101
22.865819	117.872927
22.863668	117.866186
22.861392	117.859259
22.858231	117.850849
22.855358	117.843755
22.853478	117.837951
22.850170	117.828789
22.847709	117.823195
22.845624	117.818156
22.843553	117.813495
22.839014	117.806083
22.834275	117.799625
22.832558	117.797982
22.829080	117.790531
22.824865	117.782349
22.822440	117.777701
22.819994	117.772485
22.815196	117.764514
22.811386	117.757643



22.808896	117.751293
22.806243	117.743812
22.804902	117.739693
22.803023	117.733888
22.802190	117.730698
22.802154	117.729752
22.800009	117.723200
22.798816	117.716802
22.796200	117.707235
22.795066	117.702352
22.792377	117.693925
22.789761	117.684359
22.788155	117.676459
22.786248	117.666867
22.784317	117.659738
22.782056	117.650159
22.780803	117.645279
22.778976	117.637768
22.777098	117.631964
22.774828	117.622196
22.773156	117.612595
22.770828	117.604344
22.769458	117.599469
22.767948	117.594030
22.765376	117.585598
22.763483	117.579416
22.760034	117.572721
22.756461	117.565842
22.754766	117.561736
22.750241	117.554702
22.745835	117.547664
22.743735	117.545279
22.742305	117.541921
22.738208	117.533733
22.735703	117.530036
22.732985	117.523883
22.730796	117.519227
22.727974	117.513457
22.724813	117.505047
22.721593	117.498155
22.720554	117.495730
22.718800	117.493142
22.716346	117.487737
22.714268	117.482887
22.711653	117.473321
22.709163	117.466971
22.707321	117.462112
22.703725	117.451634
22.701787	117.444316
22.700292	117.439256
22.697301	117.429134
22.696969	117.426684
22.695540	117.423326

22.694258	117.417689
22.690611	117.405887
22.688371	117.396875
22.686456	117.390125
22.685167	117.381268
22.684607	117.375984
22.684570	117.375038
22.685639	117.369126
22.687747	117.365639
22.693010	117.358248
22.698162	117.351051
22.701198	117.347151
22.702798	117.345766
22.703690	117.344408
22.704324	117.342490
22.705577	117.335245

And thence southwesterly back to the commencement point.

#### **Internal Boundaries (Tom Price townsite)**

---

Determination Area A does not include Tom Price townsite, being all that portion of land bounded by lines starting from the northwestern corner of the northwestern severance of Gregory Location 26 and extending easterly along the northern boundary of that severance and onwards to the westernmost, northwestern corner of the northeastern severance of location 26. Thence easterly, southeasterly and southwesterly along boundaries of that severance and onwards to the easternmost, northeastern corner of the southeastern severance of location 26. Thence southwesterly, southeasterly and northwesterly along boundaries of that severance and onwards to the southernmost corner of a southwestern severance of location 26. Thence northwesterly along the southwestern boundary of that severance to the southernmost corner of the western severance of lot 36, as shown on Department of Land Information Deposited Plan 51845. Thence northwesterly along the southwestern boundary of that severance and onwards to a western boundary of Gregory location 9, as shown on Department of Land Information Deposited Plan 216332. Thence generally northerly along boundaries of that location to the southernmost, southeastern corner of Gregory location 57, as shown on Department of Land Information Deposited Plan 216345. Thence generally northwesterly, westerly, northerly, again generally northwesterly and again northerly along boundaries of that location to the southwestern corner of a western severance of location 26. Thence northerly along the western boundary of that severance and onwards to and along the

western boundary of the northwestern severance of that location back to the commencement point.

Notes:

1. Geographic Coordinates provided in Decimal Degrees
2. Cadastral boundaries sourced from Landgate
3. Spatial cadastral data dated January 2007
4. Datum: Geocentric Datum of Australia (1994)
5. Prepared by Land Claims Mapping Unit (Landgate), 6 February 2007

## **EXCLUSIONS FROM DETERMINATION AREA A**

The following areas, having been excluded from the native title determination application, are excluded from Determination Area A in accordance with section 61A of the *Native Title Act* 1993 (Cth) (and section 23C of the *Native Title Act* 1993 (Cth), and section 12I and 12J of the *Titles (Validation) and Native Title (Effect of Past Acts) Act* 1995 (WA)) because they are areas where previous exclusive possession acts have occurred and native title has been completely extinguished in relation to the whole of these areas. With the exception of those public works which are captured by the definition at paragraph 6 of this Schedule, all of the following areas are hatched in red on the maps at Attachment 1 to the First Schedule:

### **1. Freehold**

---

- (a) Gregory Location 29 (CT 145/772).

### **2. Vested Reserves**

---

- (a) Reserve 39013 (Gregory Location 47) for the purpose of a repeater station site vested pursuant to section 33 of the *Land Act* 1933 (WA) in the Australian Telecommunications Commissions on 9 August 1991;
- (b) Reserve 39204 (Gregory Location 52) for the purpose of a pistol club and range vested pursuant to section 33 of the *Land Act* 1933 (WA) in the Shire of West Pilbara on 20 September 1985, and re-vested in the Shire of Ashburton for the purpose of "recreation – archery" on 19 April 1991; and
- (c) Reserve 42406 (Gregory Location 93) for the purpose of soil extraction vested pursuant to section 33 of the *Land Act* 1933 (WA) in the Shire of Ashburton on 27 November 1992.

### 3. Special Leases

---

- (a) Special Lease 3116/3466 granted on 4 November 1966 pursuant to section 116 of the *Land Act 1933* (WA) and the *Iron Ore (Hamersley Range) Agreement Act 1963-1964* for the special purpose of the construction, operation and use of an aerodrome;
- (b) Special Lease 3116/3467 (GE I144501) granted on 4 November 1966 pursuant to section 116 of the *Land Act 1933* (WA) and the *Iron Ore (Hamersley Range) Agreement Act 1963-1964* for the special purpose of boring for, conserving, reticulating and drawing water;
- (c) Special Lease 3116/4001 granted on 31 March 1969 pursuant to section 116 of the *Land Act 1933* (WA) and the *Iron Ore (Hamersley Range) Agreement Act 1963-1964* for the special purpose of ballast stockpile sites;
- (d) Special Lease 3116/4011 granted on 18 September 1969 pursuant to section 116 of the *Land Act 1933* (WA) and the *Iron Ore (Hamersley Range) Agreement Act 1963-1964* for the special purpose of radio communications and ancillary installations and facilities;
- (e) Special Lease 3116/4592 (GE I206646) granted on 15 November 1974 pursuant to section 116 of the *Land Act 1933* (WA) and the *Iron Ore (Hamersley Range) Agreement Act 1963-1972* for the special purpose of a railway and associated works;
- (f) Special Lease 3116/4595 granted on 29 April 1974 pursuant to section 116 of the *Land Act 1933* (WA) and the *Iron Ore (Hamersley Range) Agreement Act 1963-1972* for the special purpose of a quarry for the production of road metal and railway ballast;
- (g) Special Lease 3116/4892 granted on 11 February 1972 pursuant to section 116 of the *Land Act 1933* (WA) and the *Iron Ore (Hamersley Range) Agreement Act 1963-1964* for the special purpose of permanent campsites for use in connection with the railway;

- (h) Special Lease 3116/4984 (GE I195323) granted on or about 21 October 1975 pursuant to section 116 of the *Land Act 1933 (WA)* and the *Iron Ore (Hamersley Range) Agreement Act 1963-1972* for the special purpose of a railway and associated works;
- (i) Special Lease 3116/6044 granted on 13 September 1977 pursuant to section 116 of the *Land Act 1933 (WA)* and the *Iron Ore (Hamersley Range) Agreement Act 1963-1968* for the special purpose of water pipes and power lines from bore to Tom Price townsite;
- (j) Special Lease 3116/6045 granted on 13 September 1977 pursuant to section 116 of the *Land Act 1933 (WA)* and the *Iron Ore (Hamersley Range) Agreement Act 1963-1968* for the special purpose of boring for, and conserving, reticulating and drawing water;
- (k) Special Lease 3116/6868 granted on 28 May 1981 pursuant to section 116 of the *Land Act 1933 (WA)* and the *Iron Ore (Hamersley Range) Agreement Act 1963-1979* for the special purpose of boring for, conserving, reticulating and drawing water;
- (l) Special Lease 3116/7842 (GE I123646) granted on 8 March 1984 pursuant to section 116 of the *Land Act 1933 (WA)* and the *Iron Ore (Hamersley Range) Agreement Act 1963-1982* for the special purpose of a power transmission line between Dampier, Tom Price and Paraburdoo and control equipment on an access track;
- (m) Special Lease 3116/11603 (GE I134647) granted on 18 September 1995 pursuant to section 116 of the *Land Act 1933 (WA)* and the *Iron Ore (Hamersley Range) Agreement Act 1963* for the special purpose of a bulk fuel depot and associated works and operations;
- (n) Special Lease 3116/11805 (GE G848907) granted on 15 February 1998 pursuant to section 116 of the *Land Act 1933 (WA)* and the *Iron Ore (Hamersley Range) Agreement Act 1963* for the special purpose of a railway spurline and railway and associated facilities;

- (o) Special Lease 3116/11806 (GE G848909) granted on 15 February 1998 pursuant to section 116 of the *Land Act* 1933 (WA) and the *Iron Ore (Hamersley Range) Agreement Act* 1963 for the special purpose of a communications tower and railway and associated facilities;
- (p) Special Lease 3116/11807 (GE G848902) granted on 15 February 1998 pursuant to section 116 of the *Land Act* 1933 (WA) and the *Iron Ore (Hamersley Range) Agreement Act* 1963 for the special purpose of access roads and railway and associated facilities;
- (q) Special Lease 3116/11808 (GE G848898) granted on 15 February 1998 pursuant to section 116 of the *Land Act* 1933 (WA) and the *Iron Ore (Hamersley Range) Agreement Act* 1963 for the special purpose of a campsite and services corridor, railway and associated facilities;
- (r) Special Lease 3116/11869 (GE I134828) granted on 13 August 1997 pursuant to section 116 of the *Land Act* 1933 (WA) and the *Iron Ore (Hamersley Range) Agreement Act* 1963 for the special purpose of the development, construction, provision, upgrading, operation and use of a railway power transmission line and communications system and associated facilities including borrow pits; and
- (s) Special Lease 3116/11913 (GE G848899) granted on 15 February 1998 pursuant to section 116 of the *Land Act* 1933 (WA) and the *Iron Ore (Hamersley Range) Agreement Act* 1963 for the special purpose of the construction, development, maintenance, use and operation of Communication Repeater Station 830 including access road thereto and ancillary installations and facilities.

#### **4. Dedicated roads and roads set aside, taken or resumed**

---

- (a) Road No.1644 (with a width of 20.12 metres) set aside, taken, or resumed under section 17 of the *Public Works Act* 1902 (WA), gazetted on 31 July 1903, p.1963;

- (b) Road No.1718 (with a width of 20.12 metres) set aside, taken, or resumed under section 17 of the *Public Works Act* 1902 (WA), gazetted on 18 December 1903, p.3310;
- (c) Road No.14619 (with a width of 100.6 metres) dedicated pursuant to section 288 of the *Local Government Act* 1960 (WA), gazetted on 3 March 1972, p.489;
- (d) Road No.15057 (with a width of 100.58 metres) dedicated pursuant to section 288 of the *Local Government Act* 1960 (WA), gazetted on 14 March 1975, p.875;
- (e) Public Road (Tom Price Paraburdoo Road) dedicated pursuant to section 56 of the *Land Administration Act* 1997 (WA), marked on Deposited Plans No.242848 and 242851; and
- (f) Road No.1644 (Nameless Valley Drive), (with a width of 20.12 metres) dedicated at common law and, marked on Miscellaneous Plan 470 sheet 2.

## **5. Telecommunications Facilities**

---

The following sites on which public works, as that expression is defined in the *Native Title Act* 1993 (Cth), have been constructed:

- (a) Barnett Telecommunications Site, being a rectangular area of 500m<sup>2</sup> (25m x 20m), the station mark of which is located approximately at Longitude 117°40'23.96" Latitude 22°20'28.99"; and
- (b) Mt Nameless Telecommunications Site, being a square shaped area of 8,361m<sup>2</sup> (91.44m x 91.44m), the station mark of which is located approximately at Longitude 117°45'37.51" Latitude 22°43'12.40".



## **6. Public Works**

---

Any public works as that expression is defined in the *Native Title Act* 1993 (Cth) and the *Titles (Validation) and Native Title (Effect of Past Acts) Act* 1995 (WA) within the external boundary of Determination Area A including the land and waters defined in section 251D of the *Native Title Act* 1993 (Cth), are excluded from Determination Area A.

**FIRST SCHEDULE – ATTACHMENT 1**

**MAPS SHOWING DETERMINATION AREA A,  
EXCLUSIONS FROM DETERMINATION AREA A,  
AND AREAS TO WHICH SECTION 47B OF THE *NATIVE TITLE ACT 1993* (CTH)  
APPLIES**

Map 1 - Whole of determination area

Map 2 - Enlargement 1

Map 3 - Enlargement 2

Map 4 - Enlargement 3

# Eastern Guruma Determination of Native Title WAD 6208/98 First Schedule, Attachment 1 MAP 1

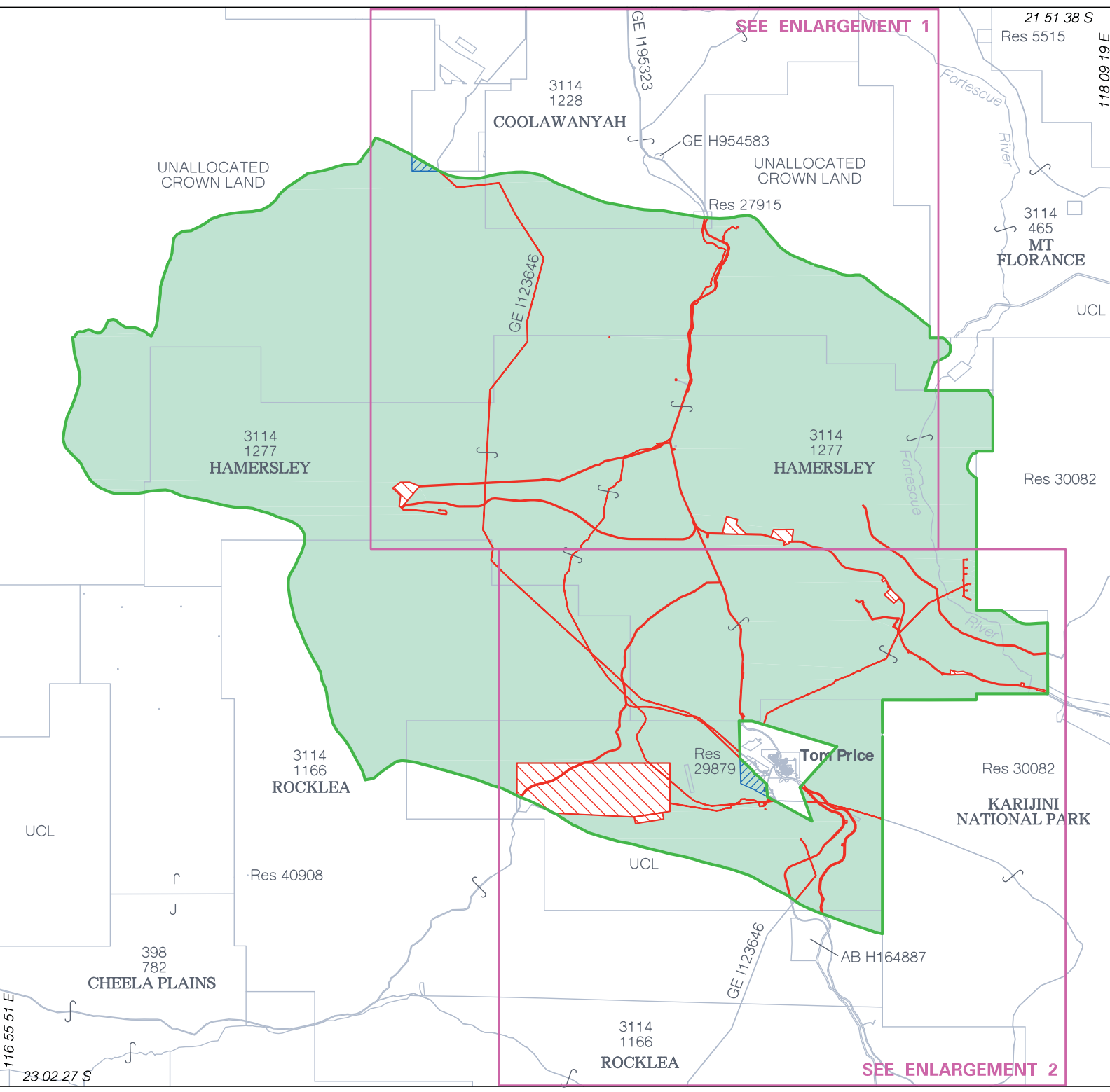
NNTR attachment:  
 WCD2007/001,  
 Attachment 1: First Schedule (Including  
 determination maps),  
 Page 19 of 22, A4, 01/03/2007

## LEGEND

- DETERMINATION AREA A**
- PREVIOUS EXCLUSIVE POSSESSION ACTS  
WHICH ARE EXCLUDED FROM THE  
DETERMINATION AREA PURSUANT TO s.61A NTA**
- SECTION 47B AREAS**



CADASTRE SOURCE LANDGATE SCDB ??? 2007  
 OUR REF: G:\CLAIMS\WORK\WSP\7703\WSP\771.GDA  
 FOR INFORMATIONAL PURPOSES ONLY. THIS MAP IS A PICTORIAL REPRESENTATION OF DATA EXTRACTED FROM  
 LANDGATE DATASETS AND IS INTENDED TO BE AN OVERVIEW OF GENERAL GEOSPATIAL INFORMATION.  
 WATERLINES SHOWN ON THIS MAP DO NOT NECESSARILY DEPICT AN EXACT CADASTRAL BOUNDARY.  
 NATIVE TITLE APPLICATION BOUNDARIES INTERPOLATED FROM DESCRIPTIONS HELD BY THE  
 NATIONAL NATIVE TITLE TRIBUNAL AND THE FEDERAL COURT.  
 REFERENCE SHOULD BE MADE TO NNTR FOR CONFIRMATION OF THIS BOUNDARY FOR ANY LEGAL PURPOSES.  
 IN THE EVENT OF ANY DISCREPANCY BETWEEN THE WRITTEN APPLICATION DESCRIPTION AND THE AREAS DEPICTED ON  
 THIS MAP THE WRITTEN DESCRIPTION SHALL TAKE PREFERENCE AS THE MAPS AND/OR ENLARGEMENTS ARE INDICATIVE ONLY.

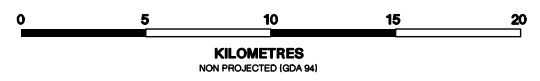


WAD6208\_98\_DETERRMINATION\_A3M Prepared by Land Claims Mapping Unit, DL

# Eastern Guruma Determination of Native Title WAD 6208/98 First Schedule, Attachment 1 MAP 1 ENLARGEMENT 1

## LEGEND

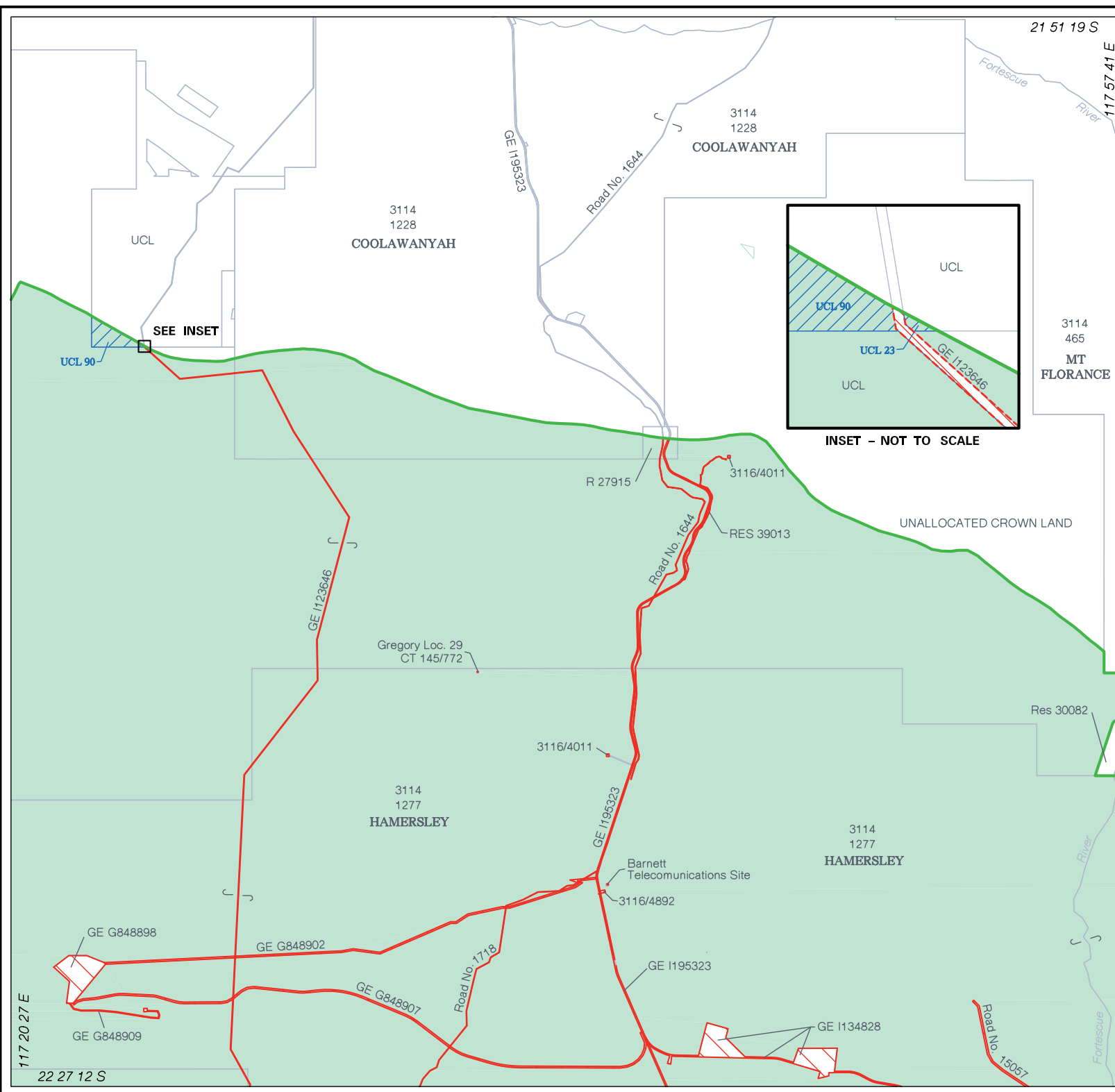
- DETERMINATION AREA A
- PREVIOUS EXCLUSIVE POSSESSION ACTS WHICH ARE EXCLUDED FROM THE DETERMINATION AREA PURSUANT TO s.61A NTA
- SECTION 47B AREAS



**NNTR attachment:**  
 WCD2007/001,  
 Attachment 1: First Schedule (Including  
 determination maps),  
 Page 20 of 22, A4, 01/03/2007



CADASTRE SOURCE LANDGATE SC08 JAN 2008  
 OUR REF G:\WAG\WAD6208\_98\DETERMINATION\GDA\WAD6208\_98\_DETERMINATION\_E1.GDA  
 FOR INFORMATIONAL PURPOSES ONLY. THIS MAP IS A PICTORIAL REPRESENTATION OF DATA EXTRACTED FROM  
 LANDGATE DATASETS AND IS INTENDED TO BE AN OVERVIEW OF GENERAL GEOSPATIAL INFORMATION.  
 WATERLINES SHOWN ON THIS MAP DO NOT NECESSARILY DEPICT AN EXACT CADASTRAL BOUNDARY.  
 NATIVE TITLE APPLICATION BOUNDARIES INTERPOLATED FROM DESCRIPTIONS HELD BY THE  
 NATIONAL NATIVE TITLE TRIBUNAL AND THE FEDERAL COURT.  
 REFERENCE SHOULD BE MADE TO NNTR FOR CONFIRMATION OF THIS BOUNDARY FOR ANY LEGAL PURPOSES.  
 IN THE EVENT OF ANY DISCREPANCY BETWEEN THE WRITTEN APPLICATION BOUNDARY DESCRIPTION AND THE AREAS DEPICTED ON  
 THIS MAP THE WRITTEN DESCRIPTION SHALL TAKE PRECEDENCE AS THE MAPS AND/OR ENLARGEMENTS ARE INDICATIVE ONLY.



WAD6208\_98\_DETERMINATION.E1.A3M Prepared by Land Claims Mapping Unit L...

# Eastern Guruma Determination of Native Title WAD 6208/98 First Schedule, Attachment 1 MAP 1 ENLARGEMENT 2

## LEGEND

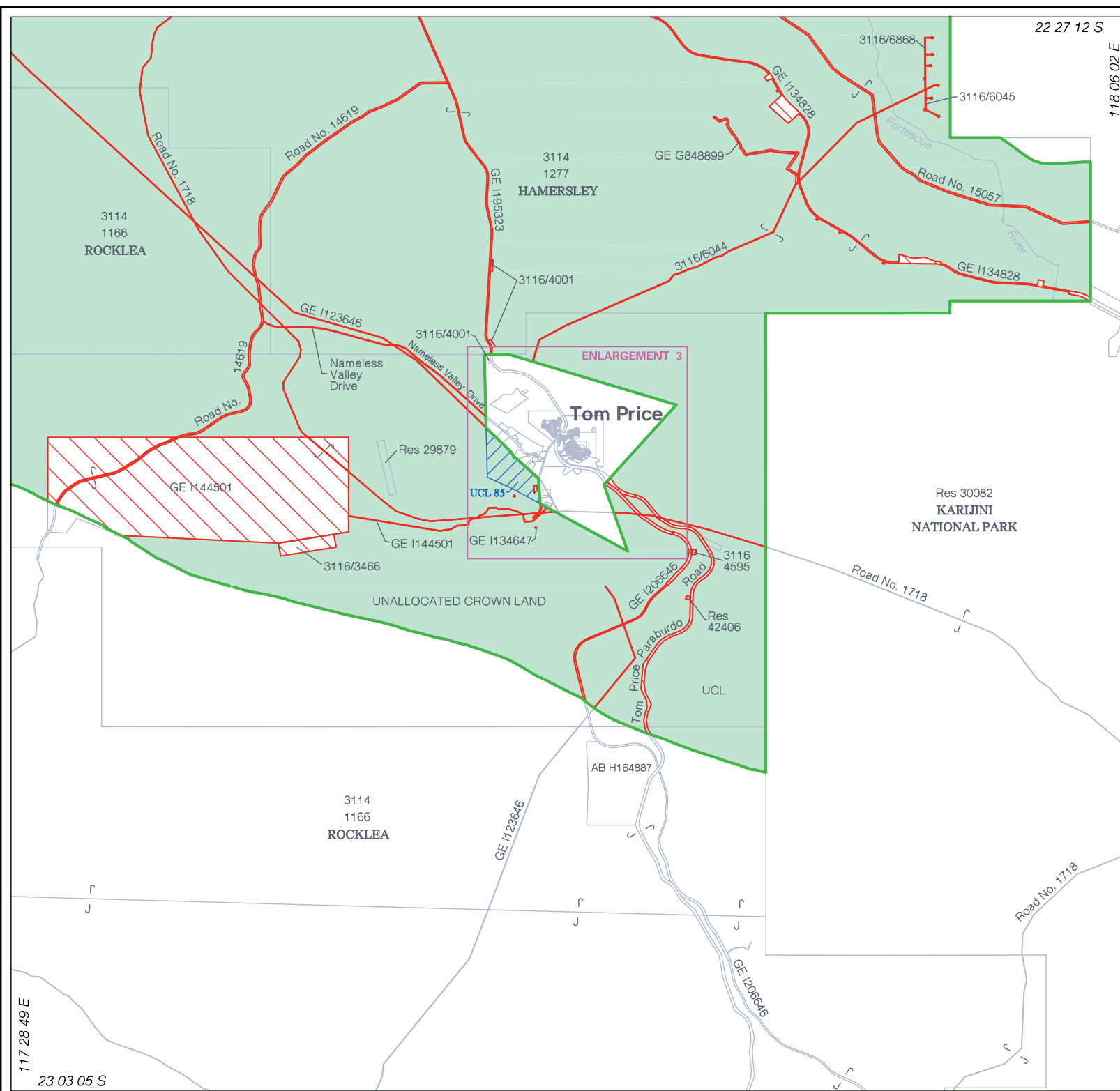
- DETERMINATION AREA A
- PREVIOUS EXCLUSIVE POSSESSION ACTS WHICH ARE EXCLUDED FROM THE DETERMINATION AREA PURSUANT TO s.61A NTA
- SECTION 47B AREAS



NNTT attachment:  
WCD2007/001,  
Attachment 1: First Schedule (Including  
determination maps),  
Page 21 of 22, A4, 01/03/2007



CADASTRE SOURCE LANDGATE SCDB JAN 2008  
OUR REF Q1WAQWAD2008.98/DETERMINATION/WAD6208.98/DETERMINATION.E2.GDA  
FOR INFORMATIONAL PURPOSES ONLY. THIS MAP IS A PICTORIAL REPRESENTATION OF DATA EXTRACTED FROM  
LANDGATE DATASETS AND IS INTENDED TO BE AN OVERVIEW OF GENERAL GEOSPATIAL INFORMATION.  
WATERLINES SHOWN ON THIS MAP DO NOT NECESSARILY DEPICT AN EXACT CADASTRAL BOUNDARY.  
NATIVE TITLE APPLICATION BOUNDARIES INTERPOLATED FROM DESCRIPTIONS HELD BY THE  
NATIONAL NATIVE TITLE TRIBUNAL AND THE FEDERAL COURT.  
REFERENCE SHOULD BE MADE TO NNTT FOR CONFIRMATION OF THIS BOUNDARY FOR ANY LEGAL PURPOSES.  
IN THE EVENT OF ANY DISCREPANCY BETWEEN THE WRITTEN APPLICATION BOUNDARY DESCRIPTION AND THE AREAS DEPICTED ON  
THIS MAP THE WRITTEN DESCRIPTION SHALL TAKE PREFERENCE AS THE MAPS AND/OR ENLARGEMENTS ARE INDICATIVE ONLY.



117 28 49 E  
23 03 05 S

22 27 12 S  
118 06 02 E

WAD6208\_98\_DETERMINATION.E2.A3M Prepared by Land Claims Mapping Unit, DCI

